

86 Old Church Road
Chingford
E4 8BX

T: 0208 524 7444
www.kings-group.net



Connington Crescent, E4 6LA



Guide Price £525,000 Freehold

*** 3 BEDROOM SEMI-DETACHED HOUSE ***

Kings of Chingford are delighted to offer to the market this presented three bedroom family home.

Situated on a peaceful residential road, this property is perfectly located with access to local amenities and falling in to the catchment area for some great local schools including Longshaw Primary School.

This wonderful home is arranged over two floors. The ground floor is comprised of an open plan kitchen/living room leading to the adjoining dining room. The kitchen has been tastefully finished with high gloss base & eye level units, integrated appliances including a fully plumbed fridge freezer. The kitchen also benefits from an breakfast bar/island.

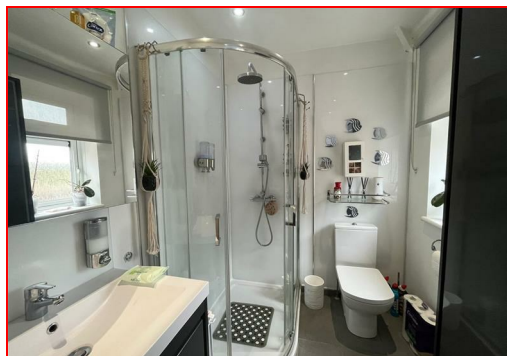
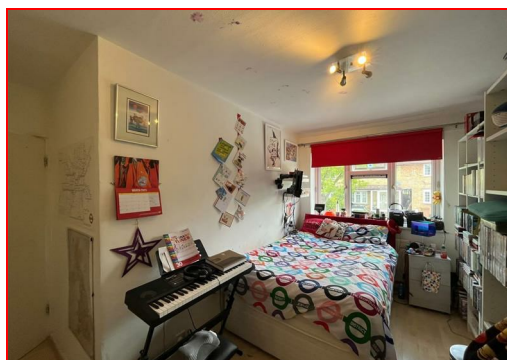
To the first floor you have three very generously sized bedrooms all offering storage. The fully tiled, bathroom is complete with a modern white hand basin, toilet and a separate shower enclosure.

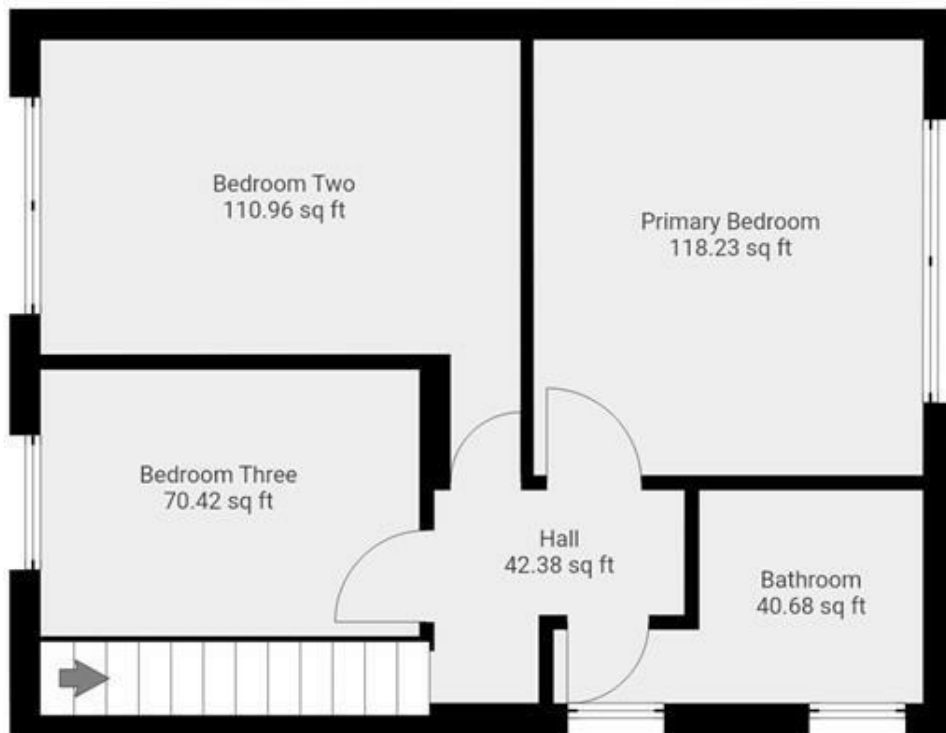
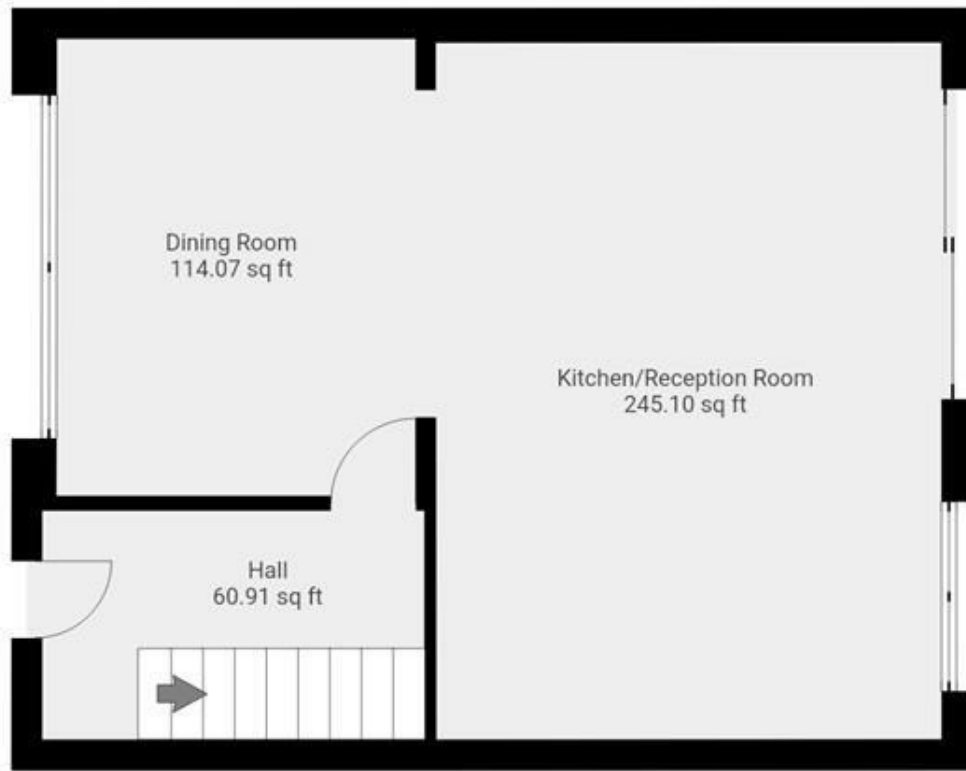
To the front of the property you have a driveway with space for at least 2 vehicles. To the rear you have a low maintenance, private, south facing garden. This serene outdoor space is well perfect for entertaining in the summer months.

Well suited to first time buyers or those of you looking to upsize, this property really must be viewed to be fully appreciated.

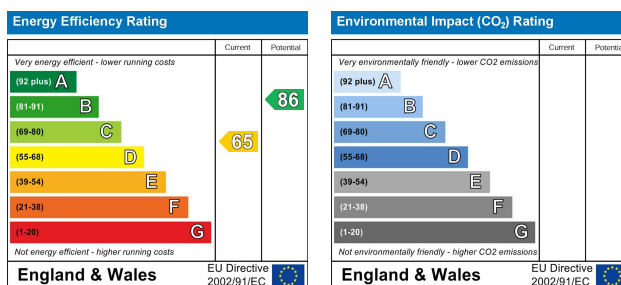
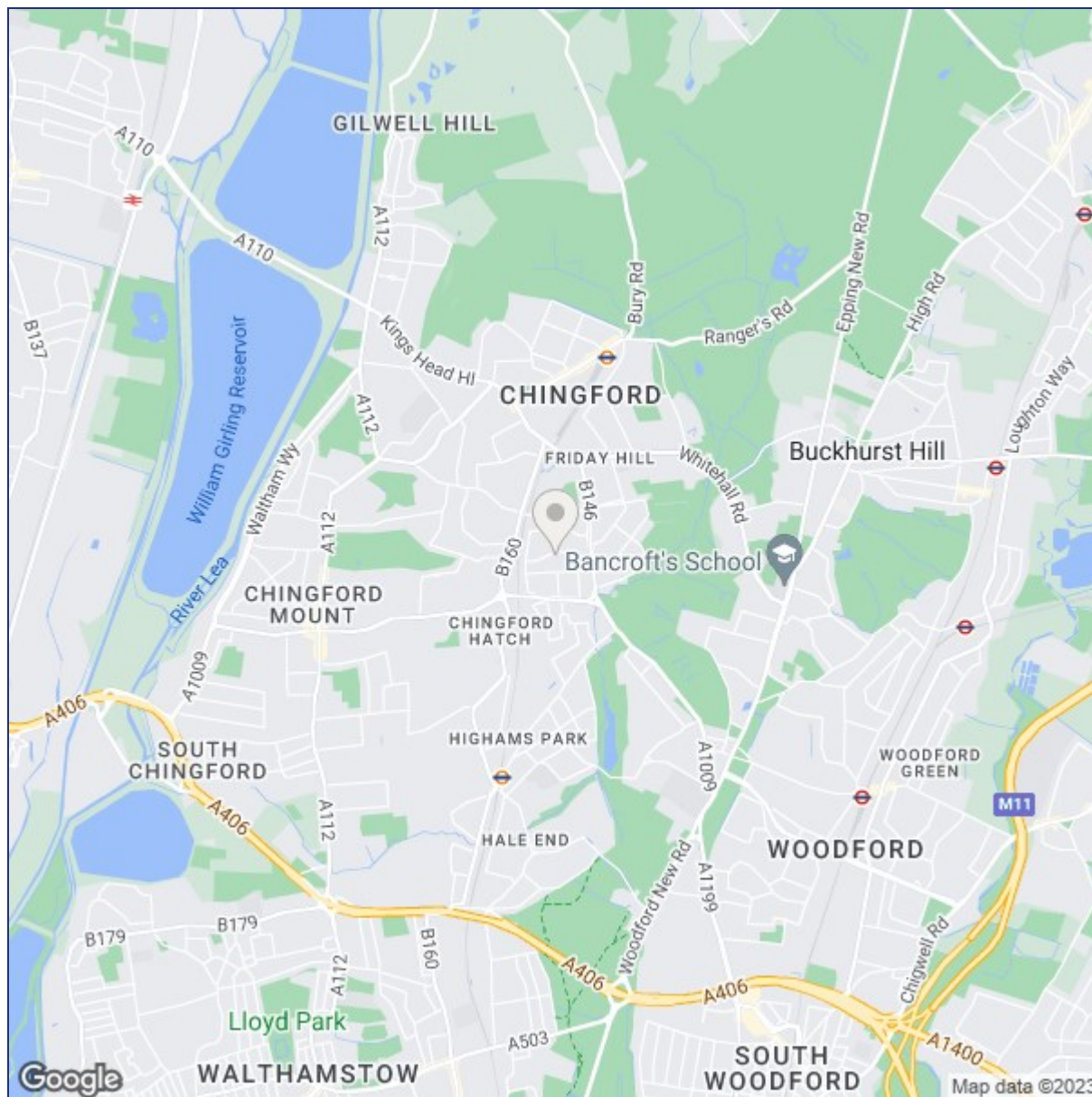
Call our office now to make your booking and avoid disappointment.

EPC - D
Tenure - Freehold
Council Tax Band - D





THIS FLOORPLAN IS PROVIDED WITHOUT WARRANTY OF ANY KIND. SENSOPIA DISCLAIMS ANY WARRANTY INCLUDING, WITHOUT LIMITATION, SATISFACTORY QUALITY OR ACCURACY OF DIMENSIONS.



("These details are correct at time of going to press").

THE PROPERTY MISDESCRIPTIONS ACT 1991. The agent has not tested any apparatus, equipment, fixtures or services and so cannot verify that they are in working order, or fit for the purpose. References to the Tenure of a property are based on information supplied by the vendor. The agent has not had sight of the Title documents. A buyer is advised to obtain verification from their Solicitor or Surveyor.

